



52ND FIL LUGE EUROPEAN CHAMPIONSHIPS EBERSPÄCHER WORLD CUP

EBERSPÄCHER TEAM RELAY WORLD CUP PRESENTED BY BMW

SIGULDA, LATVIA 04.01.2021 – 10.01.2021



A form has to be completed no earlier than 48h before crossing the border of the Republic of Latvia.

PLEASE ENTER
<https://covidpass.lv/en>

New form **Resend QR code**

Name * Last name *

Travel document (Passport, ID card) number *

E-mail *


Date of birth:

Date of arrival in the Republic of Latvia:

Check here if you are filling out this form for minors. Form must be submitted for each person individually!

I hereby certify that I am aware of epidemiological safety measures for restriction of spread of Covid-19 infection being implemented in Latvia, and undertake to observe them. When arriving from a state, which is published on the website of the Centre for Disease Prevention and Control (hereinafter – the CDPC) (state published on the CDPC website) at the address: <https://www.spkc.gov.lv/iv/valstu-saslimstibas-raditaji-ar-covid-19-0>, these states being subject to the special precautionary and restrictive measures, self isolation (staying at the place of residence or abode (at your indicated address), not making direct contact with other people, not attending public places, and using face and mouth cover while travelling to the place of self-isolation by public transport, monitoring your health condition and being available for communication with epidemiologists of the CDPC for 10 days since leaving the state published on the CDPC website) has to be observed. I certify with my signature that the information provided is true, and that I am aware that processing of personal data is performed pursuant to Article 6, Paragraph 1, Subparagraphs e) and d) of the Regulation (EU) 2016/679 of the European Parliament and of the Council of 27 April 2016 "On the protection of natural persons with regard to the processing of personal data and on the free movement of such data". Purpose - protection of vital public interests.

I accept

I'm not a robot  [Privacy](#) [Terms](#)

NEXT



48h

The form has to be completed no earlier than 48h before crossing the border of the Republic of Latvia



For all persons

The form has to be completed for all persons, including wards and children



QR code

When completing the form, you will receive a QR code with the necessary information for confirmation of submission



30 days

Personal data are deleted automatically 30 days after submission of form



Self-isolation

Become acquainted with the conditions, upon fulfilment of which mandatory self-isolation has to be observed



Administrative liability

Administrative liability from 10 up to 2,000 EUR is stipulated for non-submission of the electronic form

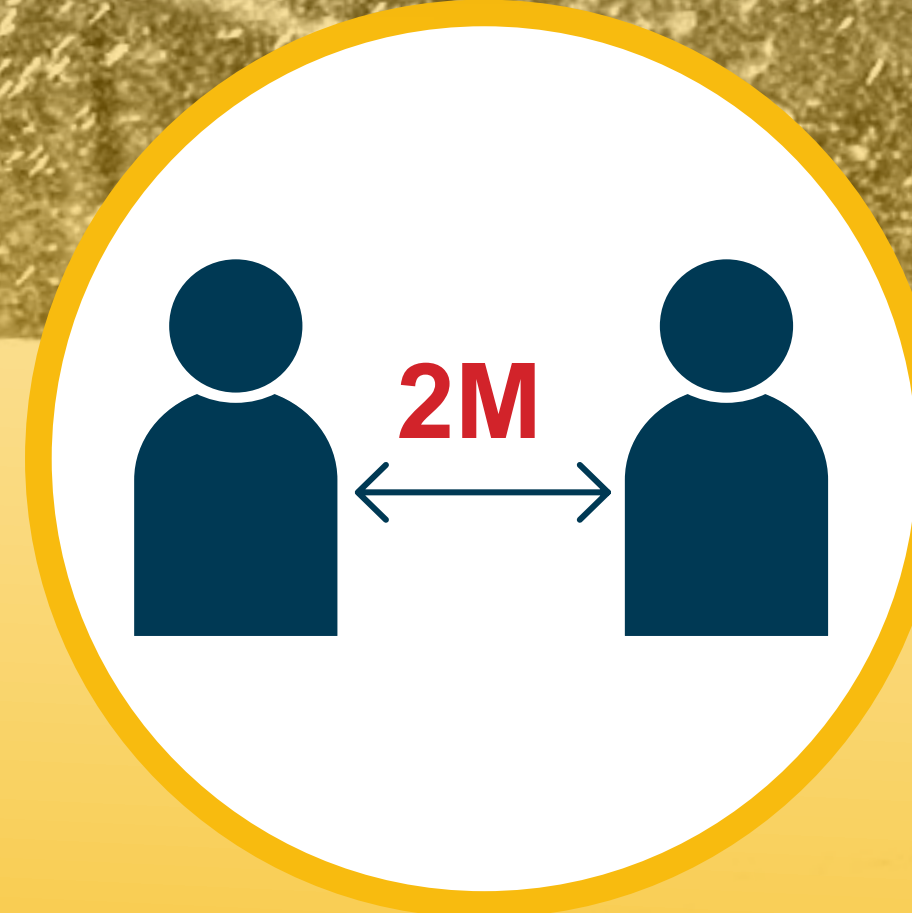
WEAR A MASK



A face mask must be used by everyone in premises outside the household if there is more than one person in the room, additionally, masks need to be worn in the start and finish areas.

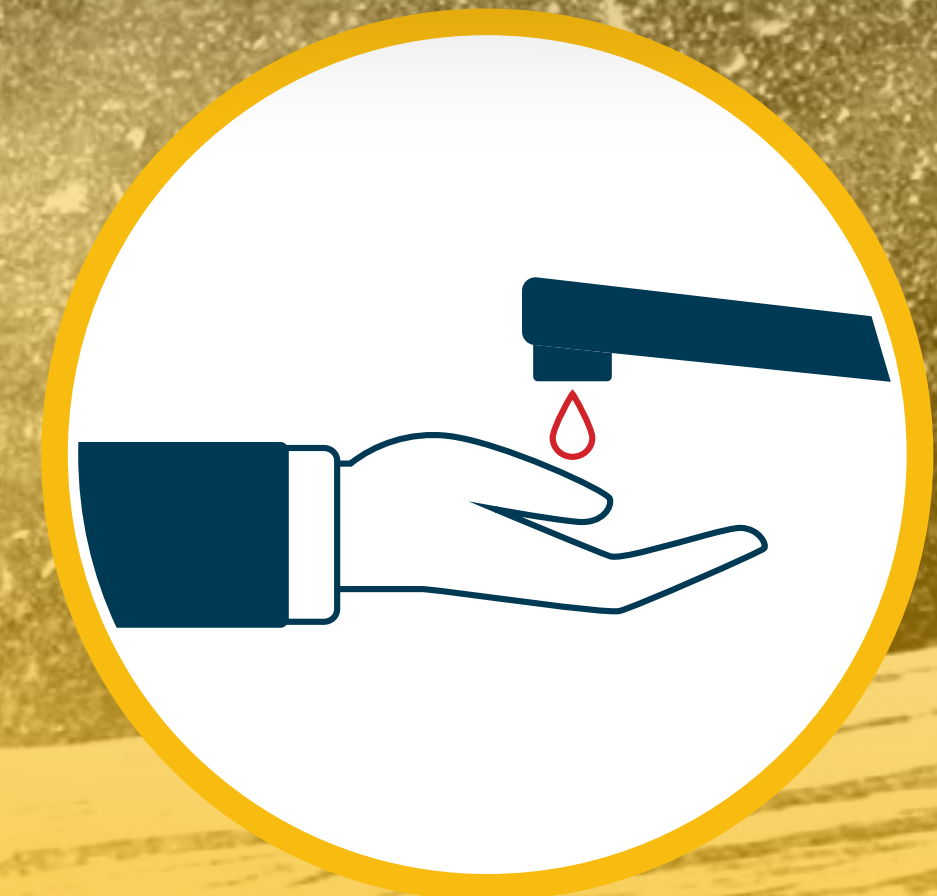
SCARVES AND BUFFS ARE NOT CONSIDERED AS FACE MASKS.

KEEP DISTANCE



2M DISTANCE IS MANDATORY.

WASH YOUR HANDS use soap & antibacterial gel



HAND HYGIENE AND DISINFECTING HANDS WHEN ENTERING BUILDINGS IS A MUST.

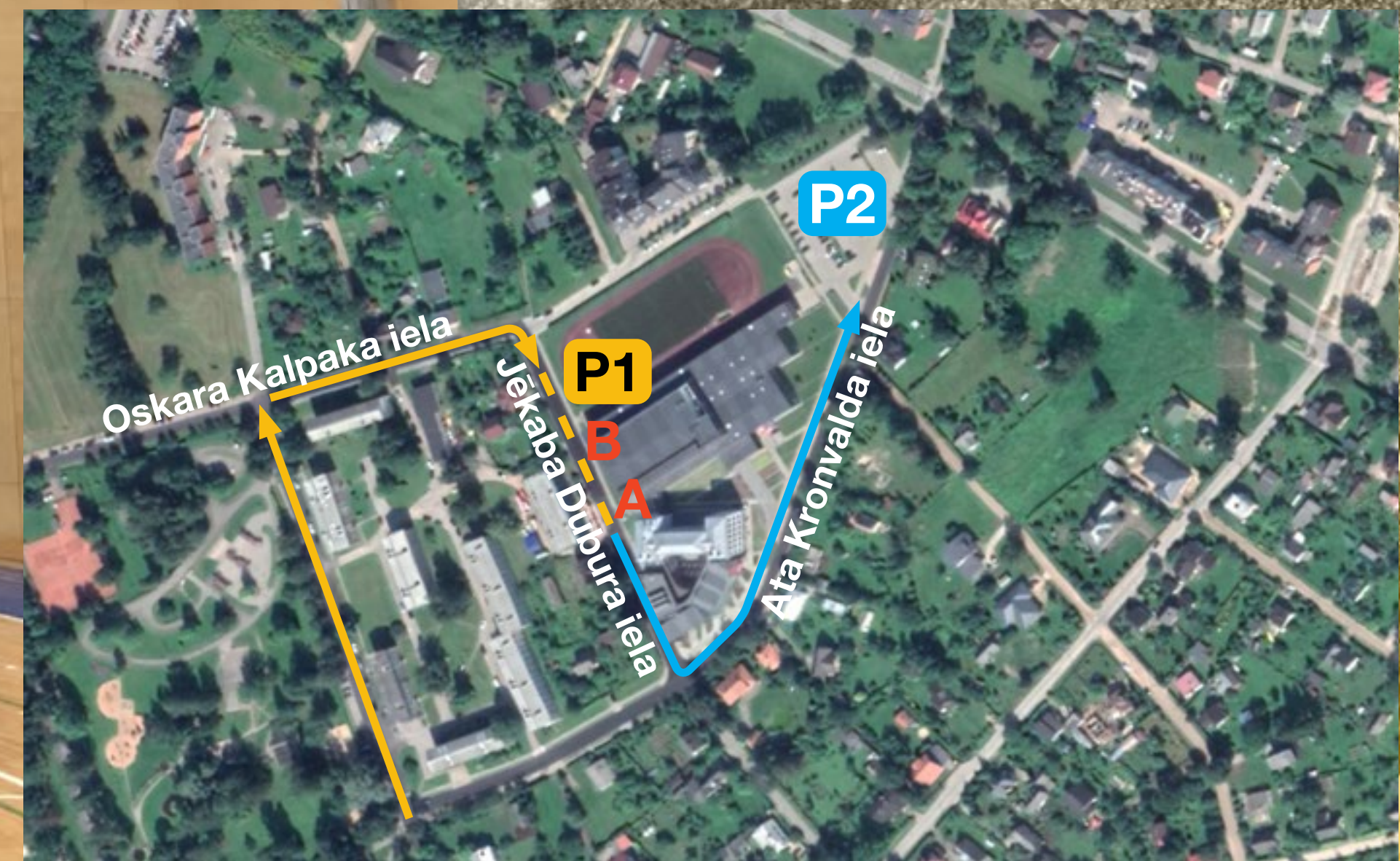
DRIVE TO THE:

**Siguldas Sporta Centrs:
Ata Kronvalda street 7a,
Sigulda**

Use the **P1** Parking **orange colour**

the parking is located on Jēkaba Duburu street,
there are 15 parking places available –
please see the dotted line in the picture.





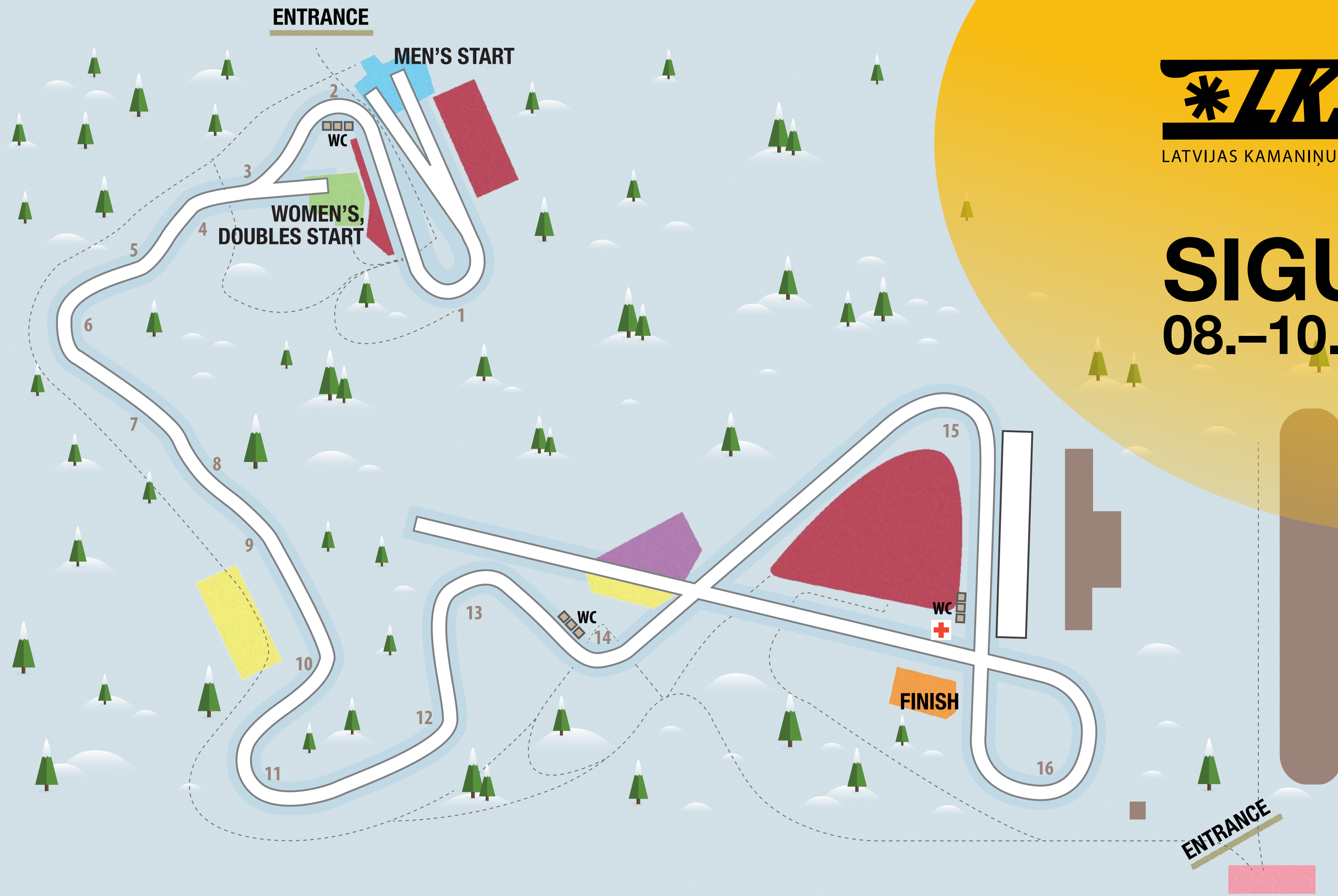
ENTER THE BUILDING THROUGH THE **A ENTRANCE, after the entrance there will be registration table.**

AFTER YOU HAVE BEEN TESTED PLEASE USE THE EXIT **B AND DRIVE WITH THE BUS TO THE **P2** where you will be waiting till the announcement of the results. If the results are negative, additional accreditations, parking permits and wristbands will be handed out to you by an assistant who will come to the bus.**

ORGANIZING COMMITEE REQUESTS YOU TO WEAR A WRISTBAND ON YOUR ARM!

SIGULDA

08.-10.01.2021.



PARKING

COACH ZONE

MEN'S START (1)

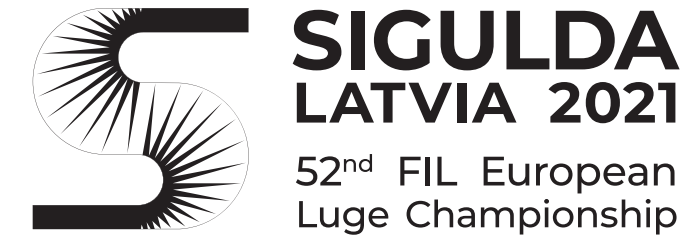
WOMEN'S AND DOUBLES START (1)

FINISH HOUSE AND OUTFRUN (2, 3, 4, 4B, 4C, 4D)

FINISH HOUSE (2, 4A, 5, 6)

TV COMPOUND (4E)

ACCREDITATION CENTER



Team _____

No.	Name, Surname	Temperature	Signature

“Team bubble” leader signature

Date _____

**Upon entering the track territory
you will have to show your accreditation,
wristband and it is mandatory to hand
in the team temperature list**

Floor 4

Floor 5

Floor 6

**Before entering start houses, you will be required to tick which changing room you will be using as an athlete,
IT IS STRICTLY FORBIDDEN TO CHANGE THE CHOSEN CHANGING ROOM WITHIN THAT DAY!**

In the competition days, changing rooms will be specified to the athlete start numbers, an information will be sent out to team leaders which changing room athletes will be using.

**LEADER WALL
AWARD CEREMONY**

WC WC

← EXIT

**COACH
ZONE**

**WEIGH-IN
TECHNICAL
INSPECTION**

COACH

PHOTO

PRESS

FIL

→ RED / BLUE

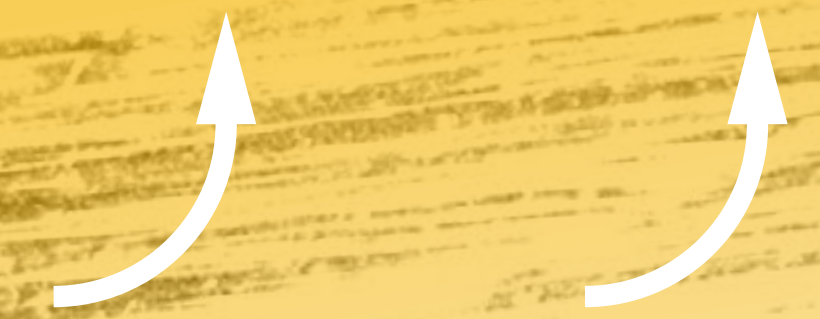
→ GREEN

**MIX
ZONE**

TRACK

TV, PHOTO, PRESS

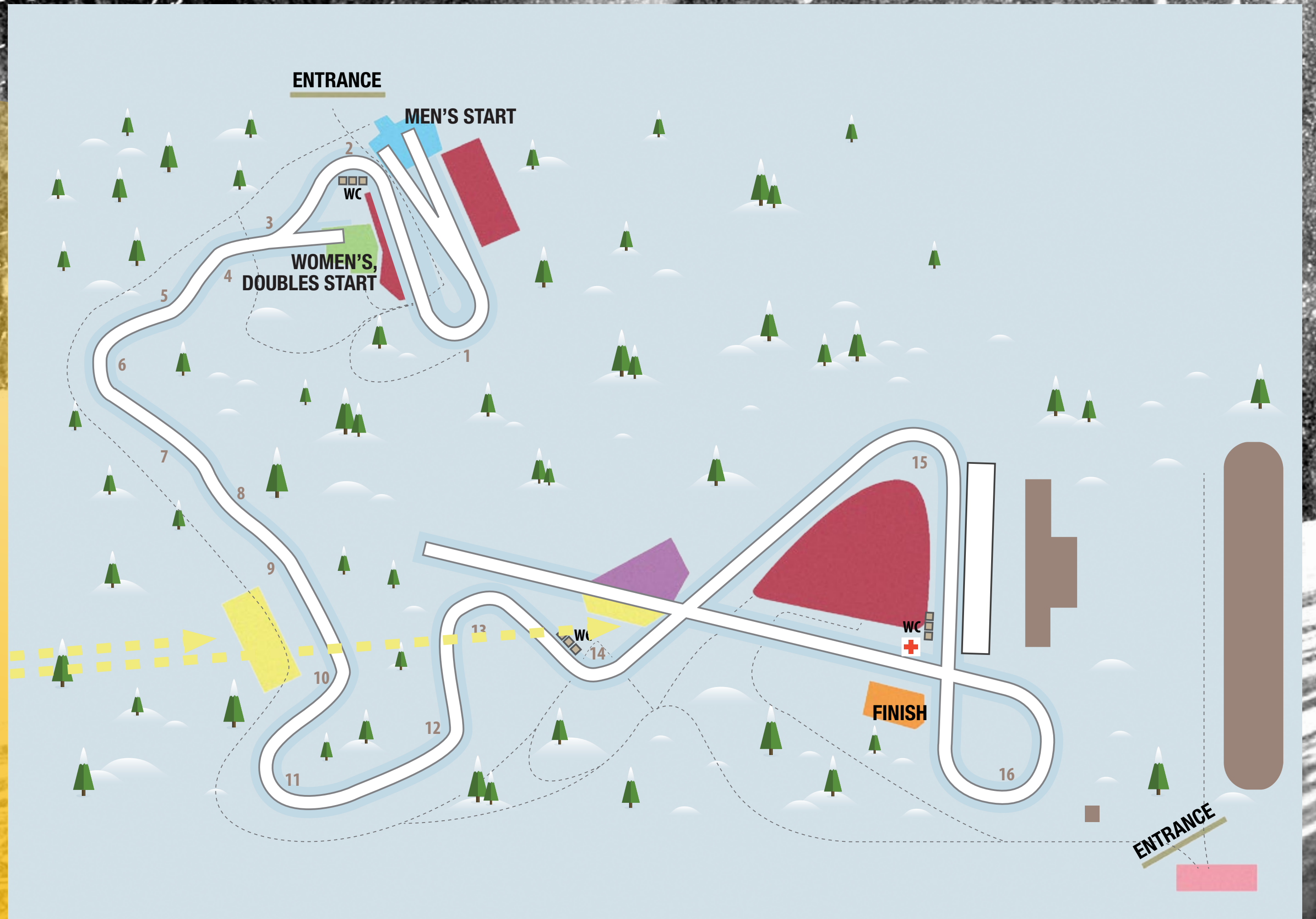
↑



Coaches are welcome to use the designated **coach zones**, maximum 5 persons are allowed in the box.

Tea will be able within these areas.

Please be kind, try to use these spaces mindfully and rotate every 15 minutes.



Parking spaces are available as first come first serve basis. If upon your arrival no parking spaces are available at the start zone, you are allowed to drive in and let the athletes exit the bus, however, you are required to drive to:

**Sigulda
Siguldas City, LV-2150
57.153614, 24.835739**

**MOVEMENT DOWN THE TRACK IS NOT ALLOWED.
FINE IS EUR 200,-**



THANK YOU
FOR YOUR ATTENTION

